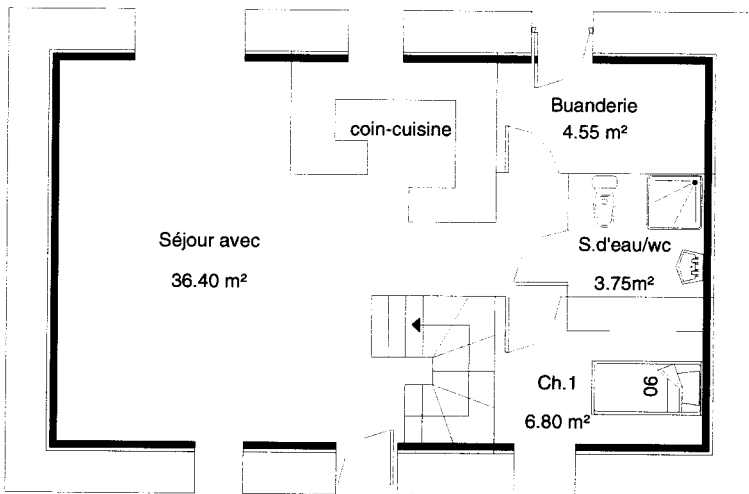


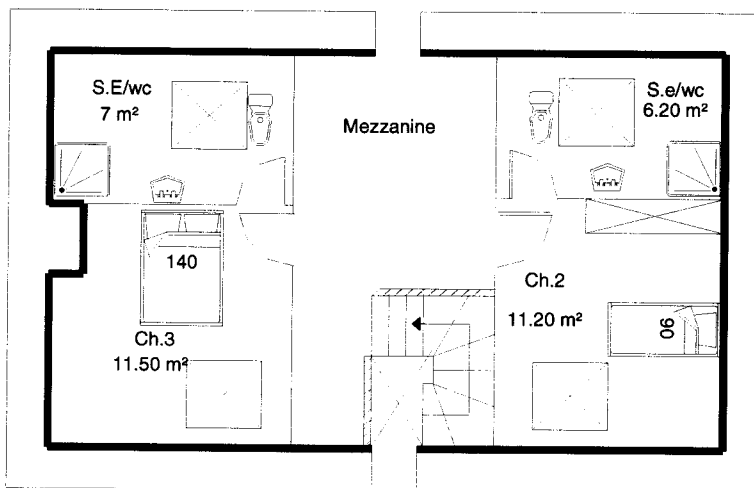
GITE N°5811

**REZ DE CHAUSSEE**

Orientation porte d'entrée : Nord



**ETAGE**



	Superficies	
	au sol	sous 1m80
Ch 1	6.80 m2	6.80 m2
Ch 2	11.20 m2	8.50 m2
Ch 3	11.50 m2	9 m2

MàJ fich\_2008. 12 10 07 FLT

**SUPERFICIE AU SOL : 89 m²**